

## 4r 2 - 6A Fialové náušnice s Rose Petals

Autorka: Darí Fejtková

### Materiál:

TOHO 15/0 2 g (T15), TOHO 11/0 1 g (T11), Rose Petal 8x7 10 ks (R8), Rose Petal 14x13 (R14) 10 ks, Es-o® Bead 10 ks (Es), Pohanka 4x3 mm 12 ks (P), NYMO B, náušnice se sítkem nebo ploškou, jehla.

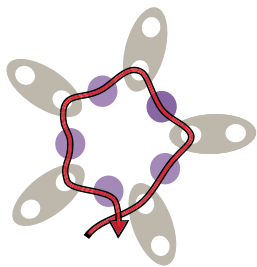
### Postup:

1. Ustříháme si 1,2 m Nyma. Navlékneme 1 Es, 1 T15, 1 Es, 1 T15, 1 Es, 1 T15, 1 Es, 1 T15, 1 Es, 1 T15. Korálky stáhneme 10 cm od konce nitě a svážeme 2 uzlíky.
2. Provlékneme Es do provlečené i volné dírky.
3. Navlékneme 2 T11, provlékneme další ES do volné dírky. Opakujeme ještě 4x.
4. Provlékneme 1 T11.

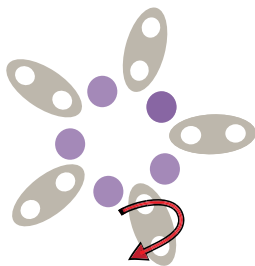


Korálková škola

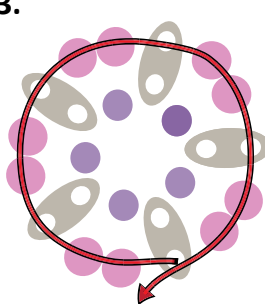
1.



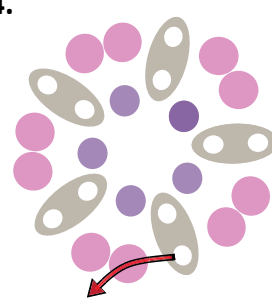
2.



3.



4.

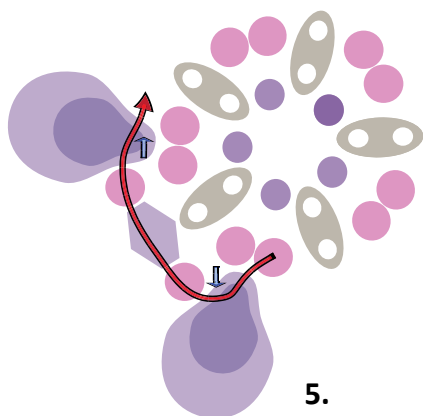


5. Navlékneme 1 R8 a 1 R14 shora. Navlékneme 1 T11, 1 P, 1 T11. Navlékneme 1 R14 a 1 R8 zespodu.

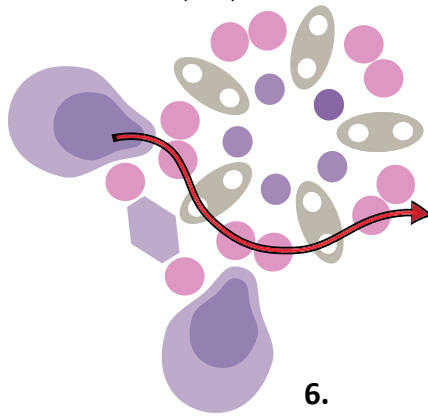
6. Provlékneme 1 T11, 1 Es, 2 T11, 1 Es, 1 T11.

7. Navlékneme 1 R8 a 1 R14 shora. Navlékneme 1 T11, 1 P, 1 T11. Provlékneme 1 R14 a 1 R8 zespodu.

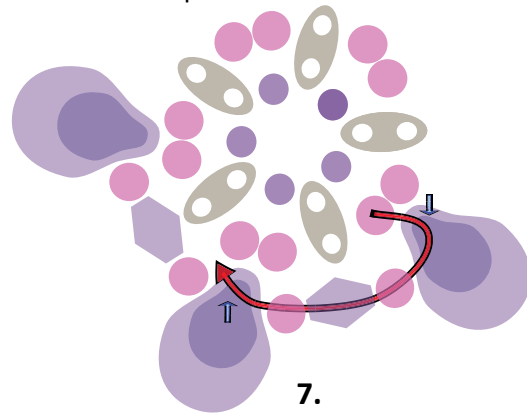
5.



6.



7.

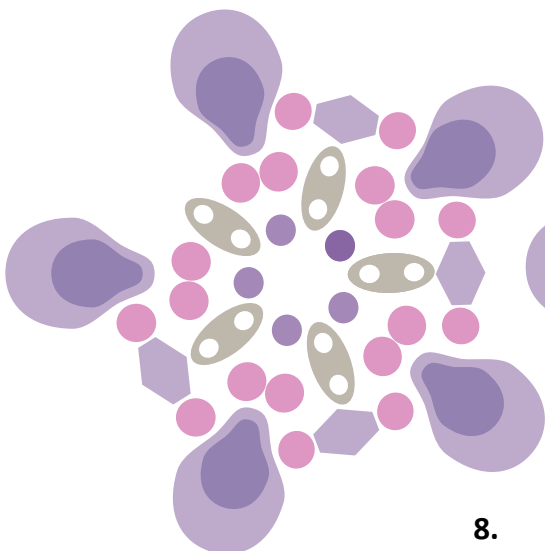


8. Kroky 6 a 7 opakujeme ještě 2x.

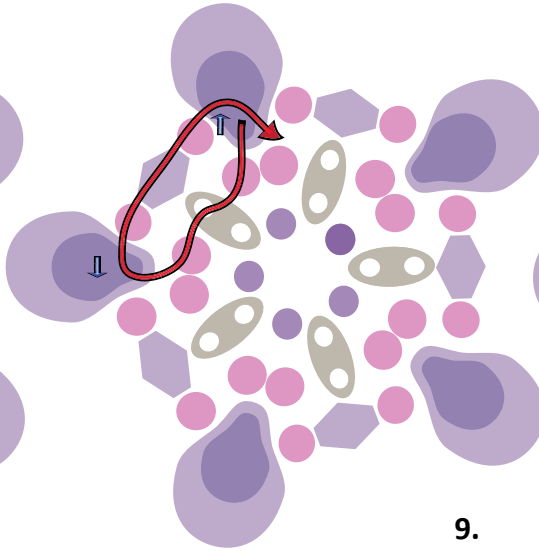
9. Provlékneme 1 T11, 1 Es, 1 T11, R8 a 1 R14 shora. Navlékneme 1 T11, 1 P, 1 T11. Provlékneme 1 R14 a 1 R8 zespodu.

10. Provlékneme 1 T11 a 1 S.

8.



9.



10.

